

SelectVu™ Sensor



SelectVu

High-speed vision inspection for accurate single camera inspection anywhere on the line

Flexible, Single Camera Vision Inspection

The TapTone SelectVu vision sensor is designed to perform visual inspection of containers using a single camera and lighting in a stainless steel enclosure. The sensor can be added to other TapTone inspections for leak and fill level or can be used as individual modules. Link up to four SelectVu sensors to a single user interface to create a modular and flexible vision inspection solution that can change to meet the demands of your production line. The sensor mounts on a remote variable height stand for easy adjustment and has minimal line space requirements.

Benefits

- Small footprint requires minimal line space
- No conveyor modifications required; sensor is cantilevered over existing conveyor
- No tools required for change-overs
- Simple height adjustment
- Easy operation using a color touch screen and icon driven menus
- Add vision inspection to other TapTone inspection options (e.g. leak or fill level)
- Use up to four SelectVu sensors together from a single user interface for vision inspection at different view points on the line

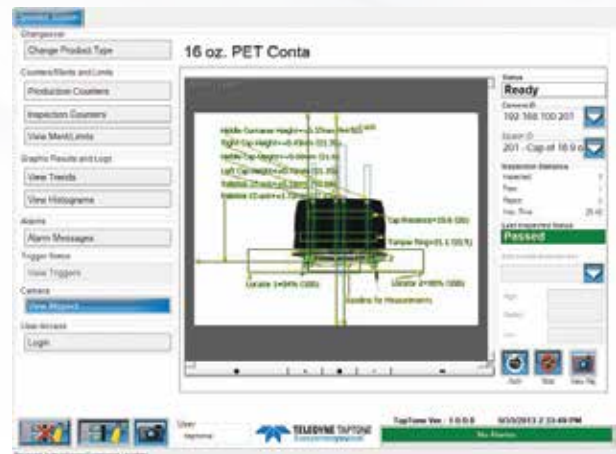
Applications

- Label inspection
- Closure inspection
- Tamper band inspection
- Date and lot code verification
- Visual fill level for clear containers
- Bar code verification

How It Works

SelectVu inspects and verifies data, in real-time, against stored "good product" merit values utilizing a single camera. As products pass by, advanced processing algorithms capture and track data up to 2,000 cpm at either 1280x940 and 640x480 dpi. These products are tracked and can be rejected from the production line by the Teledyne TapTone T4000 PC control platform.

SelectVu delivers industry leading technology assuring product quality and confidence. SelectVu is available as a monochromatic or color CCD image sensor with a PC platform interface. The user interface is a color touch screen PC rated to NEMA 4X.



SelectVu inspection

SYSTEM SPECIFICATIONS

General Specifications

Operating Speed (max)	2,000 containers per minute
Maximum Container Width	Configuration dependent
Compatible with	T4000 PC user interface
Power Requirements	Voltage: 110-125 VAC or 200-240 VAC, 50/60Hz Current: 3 Amps
Operating Conditions	Stable Ambient Temperature: 0° - 50° C (32° to 122° F) Relative Humidity: 0 – 95% maximum, non-condensing
User Interface	Industrial grade PC color touch screen, Windows 7 embedded

Sensor

Camera	Resolution 640x480 (standard) or 1280x960 (optional)
Light Source	LED diffused or spot types, 24VDC, plastic molded, IP67 rated, colors available - red, green, blue, white, infrared
Trigger Sensor	Retro-reflective, clear object, programmable gain, IP67

Environmental Ratings

Display	PC color touch screen, NEMA 4X, IP65 rated
Camera & Lens Cover	Aluminum hard coat anodized, NEMA 4X, IP67
Interface Enclosure	304 stainless steel, NEMA 4X, IP67 rated
Stand	304 stainless steel

Software & Networking Capabilities

- Ethernet connection to camera(s) and PC user interface
- Password protected menus
- Ethernet port for real-time data collection



49 Edgerton Drive • North Falmouth, MA 02556 USA

P: +1 508.563.1000

F: +1 508.564.9945

E-Mail: taptone@teledyne.com

01/2014. Specifications subject to change without notice.
TAPTONE is a registered trademark of Teledyne Instruments, Inc. Copyright 2014, TELEDYNE TAPTONE.

SelectVu Configurations

Cap/Fill Level



Label



Date/Code



SelectVu Sensor | Compatible Systems

- PRO Series

www.TapTone.com