



## Integrated Camera Solution for Total Package Inspection

The TapTone TotalVu vision sensor is the next generation in the Teledyne TapTone Vision Technology product line for non-contact visual package inspection. The system includes a fully integrated "smart" camera designed to capture multiple inspections in a single pass. Its multifunction design coupled with a small footprint and an attractive price point, gives customers several compelling advantages over larger and more expensive competitive units. The TotalVu system can operate as a stand-alone system or can be integrated with other TapTone inspection systems.

### TotalVu™

Fully integrated "smart" camera solution designed to capture multiple inspections with a single sensor

### Benefits

- Operating speeds up to 2,000 cpm
- Simple intuitive PC with touch screen
- Optical Character Recognition (OCR) for label text verification
- Password control
- Simple height adjustment
- No conveyor modifications required, system is cantilevered over the conveyor
- Stainless steel construction, NEMA 4X, IP67 rated
- Container teach-in timing
- 1-4 cameras, inspection dependent

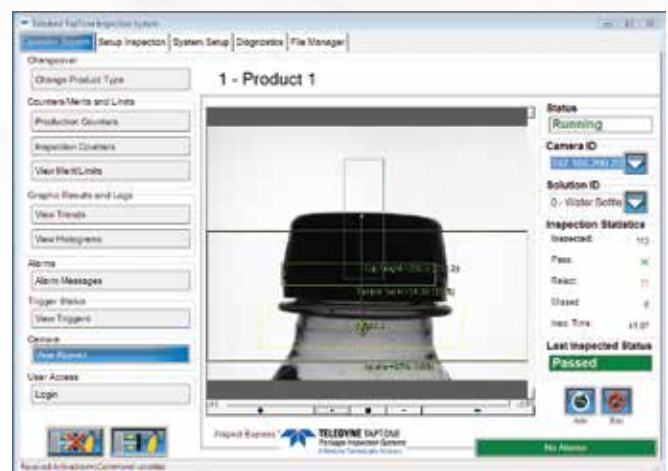
### Applications

- Label inspection
- Missing or damaged tamper ring
- Cap inspection
- Date and lot code verification
- Visual fill level inspection
- 1D and 2D bar code verification
- Glass, metal, or plastic containers (inspection dependent)

## How It Works

TotalVu inspects and verifies data, in real-time, against stored "good product" merit values utilizing single or multi-view cameras. As products pass by, advanced processing algorithms capture and track data up to 2,000 cpm at both 1280x940 and 640x480 dpi. These products are tracked and can be rejected from the production line. TotalVu delivers industry leading technology assuring your customer's confidence.

TotalVu is available as a monochromatic or color CCD image sensor on a PRO Series user interface. The user interface is a color touch screen PC rated to NEMA 4X.



TotalVu cap inspection

# SYSTEM SPECIFICATIONS

## General Specifications

Operating Speed (max)	2,000 containers per minute
Maximum Container Width	203mm (8 Inches)
Power Requirements	Voltage: 100-120VAC or 200-240VAC, 50/60Hz Current: 3.5 Amps Power: 420 VA
Operating Conditions	Stable Ambient Temperature: 0°- 50°C (32° to 122°F) Relative Humidity: 10-90% maximum, non-condensing
User Interface	Industrial Grade PC Color Touch Screen, Windows 7 Embedded

## Sensors

Camera	Resolution 640x480 (standard) or 1280x960 (optional) 256MB Memory Color or grayscale images Temperature range 0°- 45°C (32° to 113° F) Compliance: CE, RoHS Lamp Output – strobe or constant One to four cameras depending on inspections
Light Source	LED Diffused or Spot types, 24VDC Plastic molded, IP67 Rated Colors available - red, green, blue, white, infrared
Trigger Sensor	Retro-reflective, Clear Object, Programmable Gain, IP67

## Environmental Ratings

Display	PC Color Touch Screen NEMA 4X, IP65 rated
Camera & Lens Cover	Aluminum Hard Coat Anodized, NEMA 4X, IP67
Control Enclosure	304 Stainless steel, NEMA 4X IP67 rated
Junction Box	304 Stainless steel, NEMA 4X IP67 rated
Stand	304 Stainless steel Travel Height 305mm (12 inches)

## Software & Networking Capabilities

- Ethernet connection to all cameras and PRO Series User Interface
- Password Protected Menus
- Ethernet port for real-time data collection



49 Edgerton Drive • North Falmouth, MA 02556 USA

P: +1 508.563.1000

F: +1 508.564.9945

E-Mail: [taptone@teledyne.com](mailto:taptone@teledyne.com)

10/2014 Specifications subject to change without notice.  
TAPTONE is a registered trademark of Teledyne Instruments, Inc. Copyright 2014, TELEDYNE TAPTONE.

## TotalVu Sensor | Compatible Systems

- PRO Series

\*The TotalVu Sensor is only available with the PRO Series user interface.

[www.TapTone.com](http://www.TapTone.com)